



DEWMARK
HYDRO

WR 77/30



Joint width
30 mm



Top
mounted



Max load
300 kN



Movements in
6 directions



Protection
rating IP 66

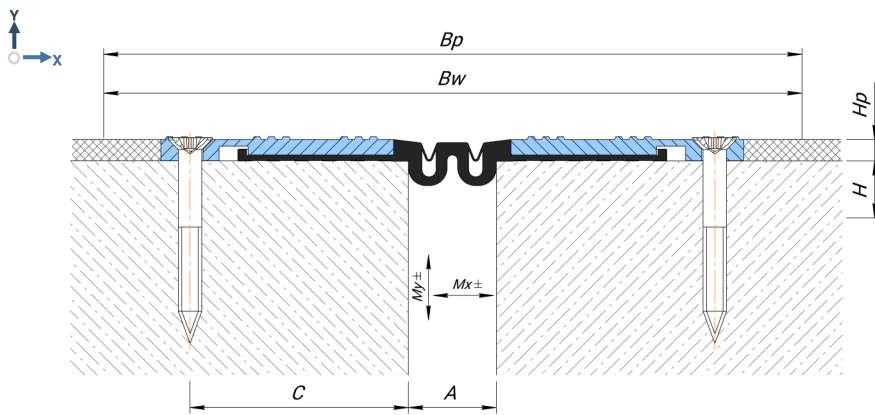


Indoor/
outdoor



FLOOR COVERING

POLYMER



Technical data

MATERIAL

Profile: aluminium EN AW 6060T6

Insert: PVC-P (oil and petrol resistant)

LENGTH

Profile: 3 meters

Insert: 20 meters

STANDARD COLOR OF INSERT (RAL)

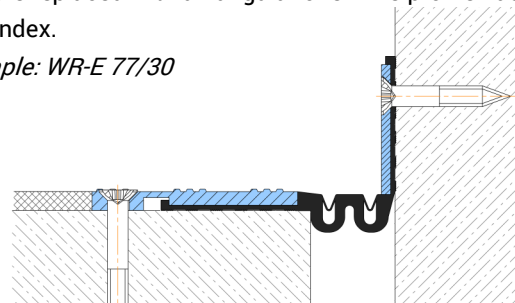
9005

Profile	A (mm)	Bw (mm)	Bp (mm)	C (mm)	H (mm)	Hp (mm)	Mx (mm)	My (mm)	Load bearing capacity, kN			
WR 77/30	30	200	200	75	10	8	20 (+10/-10)	20 (+10/-10)	50	300	70	—

Corner Versions

All profiles have angular versions in which the regular insert is replaced with an angular one. This profile has an E index.

Example: WR-E 77/30



NOTE!

! To create a reliable waterproofing contour (IP rating 66 and higher), it is recommended to glue the flexible insert with epoxy glue.